

HÚSAVÍK ORIGINAL



WHALE WATCHING

- VISITORS' TOP PICK SINCE 1995

HÚSAVÍK
the
WHALE CAPITAL
of
ICELAND



RECOMMENDED ON
 tripadvisor®



2015 | BOOK NOW: +354 464 7272
WWW.NORTHSAILING.IS


North Sailing
HÚSAVÍK

NORTH SAILING WELCOMES YOU TO A WORLD OF ADVENTURES



Established in Húsavík in the year **1995**, North Sailing was one of the first companies in Iceland to offer regular whale watching tours.

From the beginning, North Sailing has been dedicated to preserving the **Icelandic coastal culture** by salvaging and renovating old oak ships. Furthermore, North Sailing has adopted an **active environmental policy** based on the idea of **sustainable development**.

Offering frequent departures, highly qualified crews and a dedication to **sustainable** and **nature friendly** operations, **North Sailing is your perfect choice**.



THE NORTH SAILING FAMILY

North Sailing is owned and run by a local family in Húsavík. Three generations take part in daily operation and the fourth one is already lending a hand.

The North Sailing family has the advantage of working with an accomplished and highly skilled team. In every corner of the company is a committed worker determined to make the most of the visitor's experience.

The team consists of a dynamic group of experienced and enthusiastic individuals. Most of them are locals but North Sailing has also been fortunate in having people from all over the world with passion for whales, sailing and nature joining the team, adding different perspectives to the group.



3

HOURS

Adults:

€ 59 / ISK 9.300

7-15 years:

€ 24 / ISK 3.800

Under 7 years:

Free

VISITORS'
TOP PICK

HÚSAVÍK ORIGINAL WHALE WATCHING

- ✓ STEP ABOARD A **TRADITIONAL ICELANDIC OAK BOAT**
- ✓ SPEND **3 HOURS** AT SEA ENJOYING THE **WILD NATURE**

A unique opportunity to enjoy the wildlife of Skjálfandi Bay and witness whales and birds in their natural habitat.

Since 1995 this tour has been the visitors' top pick and recommended by thousands of satisfied customers worldwide.

ADMIRE THE WILD NATURE:

Whales



Puffins*



SAILING AREA



ENJOY YOUR SAILING:

Traditional oak boat



Professional guide



Warm clothes



Hot chocolate & cinnamon bun





TIMETABLE - ALL DAILY DEPARTURES FROM HÚSAVÍK

WINTER WHALE WATCHING				SUMMER WHALE WATCHING							WINTER WHALE WATCHING		
MAR.	APRIL		MAY		JUNE	JULY	AUGUST		SEPTEMBER	OCT.	NOV.		
15 Mar. 31 Mar.	1 April 14 April	15 April 30 April	1 May 14 May	15 May 31 May	1 June 30 June	1 July 14 July	15 July 10 Aug.	11 Aug. 21 Aug. 31 Aug.	1 Sep. 14 Sep. 30 Sep.	1 Oct. 31 Oct.	1 Nov. 30 Nov.		
				09:00	09:00	09:00	09:00	09:00	09:00	09:00	09:00		
		09:30	09:30	09:30	09:30	09:30	09:30	09:30	09:30	09:30	09:30		
	10:00	10:00	10:00	10:00	10:00	10:00	10:00	10:00	10:00	10:00	10:00	10:00	
					10:30*	10:30**							
11:00					11:00	11:00	11:00	11:00	11:00			11:00	
					11:30	11:30	11:30	11:30	11:30	11:30			
				12:30	12:30	12:30	12:30	12:30	12:30	12:30	12:30		
	13:30	13:30	13:30	13:30	13:30	13:30	13:30	13:30	13:30	13:30	13:30	13:30	
			14:30	14:30	14:30	14:30	14:30	14:30	14:30	14:30			
					15:00	15:00	15:00	15:00	15:00				
						16:00	16:00	16:00	16:00	16:00	16:00		
					16:30	16:30	16:30	16:30	16:30				
			17:00	17:00	17:00	17:00	17:00	17:00	17:00	17:00			
							18:00	18:00	18:00				
					20:00	20:00	20:00						

HÚSAVÍK ORIGINAL WHALE WATCHING (NS-1)

WHALES, PUFFINS AND SAILS (NS-2)

WHALES AND SAILS (NS-3)

*Daily, except Tuesdays and Wednesdays and 11 June.
**Daily, except Tuesdays and Wednesdays. Only available until 10 July.
Average sightings success 2014: Summer 97% - Winter 60%

WANT MORE OPTIONS?

Join our Húsavík Original Whale Watching tour by taking a scenic bus ride from Akureyri or a direct flight with Eagle Air from Reykjavík. You can also add a horse riding tour with Saltvík horse centre.



BUS FROM
AKUREYRI



FLY FROM
REYKJAVÍK



+ HORSE
RIDING

For more info **see pages 10-11**, call +354 464 7272 or visit www.northsailing.is

4
HOURS

15 April - 20 August:

Adults:
€ 79 / ISK 12.500

7-15 years:
€ 32 / ISK 5.000

Under 7 years:
Free



WHALES, PUFFINS AND SAILS

- ✓ SPEND **4 HOURS** AT SEA ENJOYING THE **WILD NATURE**
- ✓ LEARN OLD SAILING METHODS ON A TRADITIONAL **SAILING SHIP**
- ✓ SAIL BY **PUFFIN ISLAND** FOR A CLOSE LOOK AT **THOUSANDS OF PUFFINS**

Experience the aura of past times by joining one of our traditional sailing ships. The tour combines whale watching, bird watching and a sailing adventure. You'll sail by Puffin Island, where thousands of puffins nest, as well as the traditional whale watching areas.

WHALES AND SAILS

NS-3

When the puffin season is over (20 August) the tour is reduced to 3 hours and called **Whales and Sails**.

PRICE

21 August - 30 September:
Adults: € 69 / ISK 10.900
7-15 years: € 28 / ISK 4.400
Under 7 years: Free

ADMIRE THE WILD NATURE:



**FOR DAILY
DEPARTURES
SEE PAGE 5**

ENJOY YOUR SAILING:



WANT MORE OPTIONS?

Join our Whales, Puffins and Sails tour by taking a scenic bus ride from Akureyri. You can also add a horse riding tour with Saltvík horse centre.

For more info **see pages 10-11**, call +354 464 7272 or visit www.northsailing.is



3

DAYS

AND 2 NIGHTS

Adults:

€ 730

ISK 115.000

Under 15 years:

€ 580

ISK 92.000



BIRD AND WHALE
WATCHING
PARADISE



GRÍMSEY

ARCTIC CIRCLE WHALE WATCHING

- ✓ LIVE AND SAIL ON A TRADITIONAL SAILING SHIP
- ✓ GO BACK IN TIME TO THE DESERTED FLATEY ISLAND
- ✓ VISIT THE BIRD PARADISE GRÍMSEY AND CROSS THE ARCTIC CIRCLE

This tour is your opportunity to take time off from the hassle of modern times and get a different perspective on Northeast Iceland. The tour offers you chances of amazing moments like

sailing without the power of an engine, learning old sailing methods on board, close encounters with whales and birds, visiting remote islands and marveling at the midnight sun.

ADMIRE THE WILD NATURE:

Whales	Birds and puffins*	Midnight sun	Flatey Island	Grímsey Island & the Arctic Circle

ENJOY YOUR SAILING:

Traditional sailing ship	Professional expedition guide	Food and refreshments	Sea angling	Participate in handling the sails



DEPARTURES

Tour starts at 19:30 at the harbour in Húsavík on the following dates:

11 May - 18 May - 25 May - 1 June
15 June - 22 June - 29 June

INCLUDED

- All meals and refreshments.
- Accommodation in made up beds on board for 2 nights.
- Admission to Húsavík Whale Museum.
- Certification for crossing the Arctic Circle.
- Zodiac trips.
- 15% discount at Gamli Baukur.

SAILING ROUTE



Note that it is possible to join this tour on day 2 in the early morning at 08:30.
Note that accommodation capacity is limited.
Please book in advance.

WANT MORE OPTIONS?

Join our Grímsey Arctic Circle Whale Watching tour by taking a direct flight with Eagle Air from Reykjavík.

For more info **see pages 10-11**, call +354 464 7272 or visit www.northsailing.is





**FLY FROM
REYKJAVÍK**

9-10

HOURS

NS-1A

HÚSAVÍK ORIGINAL WHALE WATCHING FROM REYKJAVÍK


Join our Húsavík Original Whale Watching tour (see page 4-5) with a direct flight with Eagle Air from Reykjavík.

DEPARTURES
Mondays and Fridays in June - July - August.
Tuesdays and Thursdays from 15 March to 30 November.

EXTRA INCLUDED

- Return flights to Húsavík.
- Return bus transfer from Húsavík airport.
- Admission to the Húsavík Whale Museum.
- 10% discount at Restaurant Gamli Baukur.

PRICE
Adults: € 420 / ISK 78.540
Under 15 years: € 340 / ISK 62.850



**FLY FROM
REYKJAVÍK**

3

DAYS

AND 2 NIGHTS

NSE-1A

GRÍMSEY ARCTIC CIRCLE WHALE WATCHING FROM REYKJAVÍK

Join our expedition, Grímsey Arctic Circle Whale Watching (see page 8-9), with a direct flight with Eagle Air from Reykjavík.


DEPARTURES
On day 1 (see dates page 9) at 17:30 from Reykjavík Airport.

Return flight on Thursday morning from Húsavík – additional night onboard our sailing ship or guesthouse (depending on availability).

EXTRA INCLUDED

- Return flights to Húsavík.
- Return bus transfer from Húsavík airport.

PRICE
Adults: € 1.170 / ISK 184.860
Under 15 years: € 940 / ISK 147.900



**+ HORSE
RIDING**

3+2

HOURS

NS-1H

DOUBLE TAILS

Join our Húsavík Original Whale Watching tour (see page 4-5) and add a two hour horse riding tour in Húsavík and the surrounding area with Saltvík horse centre, just 5 minutes drive south from Húsavík.

DEPARTURES
For Húsavík Original Whale Watching (NS-1) see timetable on page 5.
Our staff at the ticket office will meet your wishes for a horse riding departure.

EXTRA INCLUDED

- 2 hour horse riding tour with Saltvík horse centre.

PRICE
Adults: € 94 / ISK 17.385
Under 12 years: € 47 / ISK 8.693



**+ HORSE
RIDING**

4+2

HOURS

NS-2H

DOUBLE TAILS AND SAILS

Join our Whales, Puffins and Sails tour (see page 6-7) and add a two hour horse riding tour in Húsavík and the surrounding area with Saltvík horse centre, just 5 minutes drive south from Húsavík.

DEPARTURES
For Whales, Puffins and Sails (NS-2) see timetable on page 5.
Our staff at the ticket office will meet your wishes for a horse riding departure.

EXTRA INCLUDED

- 2 hour horse riding tour with Saltvík horse centre.

PRICE
Adults: € 110 / ISK 20.425
Under 12 years: € 55 / ISK 10.212



**BUS FROM
AKUREYRI**

9

HOURS

NSA-2

HÚSAVÍK ORIGINAL WHALE WATCHING FROM AKUREYRI

Join our Húsavík Original Whale Watching tour (see page 4-5) with a direct bus from Akureyri.

DEPARTURES
Daily at 08:00 from 1 June to 10 Sept.
Daily at 09:00 from 18 June to 31 Aug.

Pick up from the SBA Bus Terminal at Hafnarstæti 82 in Akureyri.

When arriving in Húsavík, passengers will have the option of choosing between four departure times with North Sailing. At 10:00, 11:00, 12:00 or 13:30. After the whale watching tour you will have sufficient time to visit the Whale Museum, explore Húsavík and enjoy the charming harbour area before returning to Akureyri with a stop at the Goðafoss waterfall.

Return from Húsavík at 17:00 with arrival in Akureyri at approximately 18:15.

EXTRA INCLUDED

- Return bus from Akureyri to Húsavík.

PRICE
Adults: € 108 / ISK 17.000
7-15 years: € 54 / ISK 8.500
Under 7 years: Free



**BUS FROM
AKUREYRI**

9

HOURS

NSA-3

WHALES, PUFFINS AND SAILS FROM AKUREYRI

Join our Whales, Puffins and Sails tour (see page 6-7) with a direct bus from Akureyri.

DEPARTURES
Daily at 08:00 from 1 June to 20 Aug.

Pick up from the SBA Bus Terminal at Hafnarstæti 82 in Akureyri.

When arriving in Húsavík, passengers will join our popular Whales, Puffins and Sails tour at 11:30. After the whale watching tour you will have sufficient time to visit the Whale Museum, explore Húsavík and enjoy the charming harbour area before returning to Akureyri with a stop at the Goðafoss waterfall.

Return from Húsavík at 17:00 with arrival in Akureyri at approximately 18:15.

EXTRA INCLUDED

- Return bus from Akureyri to Húsavík.

PRICE
Adults: € 126 / ISK 19.900
7-15 years: € 63 / ISK 9.950
Under 7 years: Free



8
DAYS
AND 7 NIGHTS

**FLY FROM
REYKJAVIK**

Adults:
€ 4.490
ISK 709.000

Under 15 years:
€ 3.590
ISK 567.200



EXPERIENCE GREENLAND

- ✓ **LIVE AND SAIL ON BOARD A TRADITIONAL SAILING SHIP FOR 7 AMAZING DAYS**
- ✓ **ENJOY THE NATURAL WONDERS OF SCORESBY SUNN, THE LARGEST FJORD IN THE WORLD**
- ✓ **ENCOUNTER THE ARCTIC LANDSCAPE AND WILDLIFE**

Fly from Reykjavík to Greenland and join our traditional sailing ships, Opal or Donna Wood, for an amazing expedition where you explore the magnificent

nature of Scoresby Sund fjord in Northeast Greenland. The fjord extends 350 km inland and offers spectacular scenery and tranquil surroundings.



ADMIRE THE WILD NATURE:



ENJOY YOUR SAILING:



DEPARTURES WEDNESDAYS ON THE FOLLOWING DATES:

OPAL

- 15 July (Sold out)
- 22 July (Sold out)
- 29 July
- 5 August (Sold out)
- 12 August (Sold out)
- 19 August (Sold out)
- 26 August (Sold out)
- 2 September (Sold out)
- 9 September (Sold out)

DONNA WOOD

- 15 July (Sold out)
- 22 July (Sold out)
- 29 July (Sold out)
- 5 August (Sold out)
- 12 August (Sold out)
- 19 August (Sold out)
- 26 August
- 2 September
- 9 September

**BOOK EARLY
FOR 2016**

For more info call +354 464 7272 or visit northsailing.is



CAFÉ HVALBAKUR

📶 FREE WIFI
🕒 OPEN ALL YEAR

- ✓ RELAX ON THE **VERANDA** AND **ENJOY THE OCEAN VIEW**
- ✓ TRY OUR **LUNCH OFFER**
- ✓ SHOP **ICELANDIC DESIGN** IN HVALBAKUR **BOUTIQUE**

CAFÉ

OPENING HOURS - SUMMER

1 June - 31 August
From 08:00 - 20:00.

WE OFFER

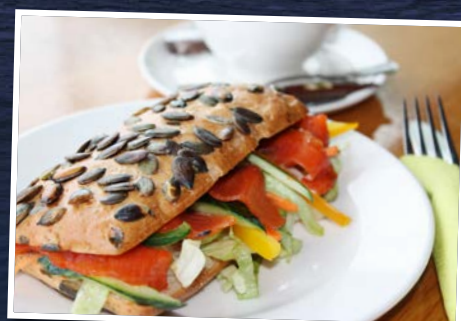
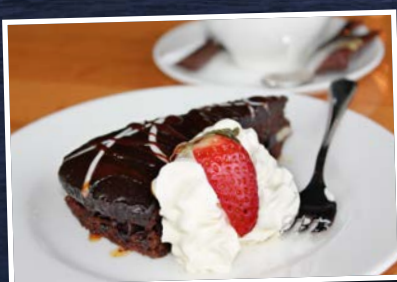
Variation of subs, wraps, pizzas, cakes, cookies and daily lunch offers.

TEL +354 464 7278

E-MAIL gamlibaukur@gamlibaukur.is

For further information and winter opening hours visit our website: www.gamlibaukur.is

The interior of this unique café has been beautifully crafted from the remains of an old oak fishing vessel - keeping true to the spirit of North Sailing. Café Hvalbakur offers a selection of food and drinks and is conveniently located directly under the ticket office.



RESTAURANT GAMLI BAUKUR

📶 FREE WIFI
🕒 OPEN ALL YEAR

- ✓ TRY THE **DAILY CATCH OF FRESH SEAFOOD**
- ✓ ENJOY **FRESH VEGETABLES FROM LOCAL FARMERS**
- ✓ TAKE IN THE LIVELY **HARBOUR ATMOSPHERE**

RESTAURANT

OPENING HOURS - SUMMER

1 June - 31 August
Sunday - Thursday
from 11:30 to 01:00.
Friday - Saturday from 11:30 to 03:00.
Kitchen is open until 22:00.

WE OFFER

Fresh seafood, traditional Icelandic dishes and a variety of other food and drinks.

TEL +354 464 2442

E-MAIL gamlibaukur@gamlibaukur.is

For further information and winter opening hours visit our website: www.gamlibaukur.is

Adorning the Húsavík harbour front, Restaurant Gamli Baukur offers the atmosphere you're looking for. This driftwood-built house is the ideal place to sit down, enjoy the fresh local food or simply relax with a drink and observe the buzzing harbour area.



GAMLI
BAUKUR
RESTAURANT - BAR - LIVE MUSIC





OUR FLEET PRESERVING CULTURAL HERITAGE

- ✓ SIX BOATS OF THE NORTH SAILING FLEET WERE **TRADITIONAL ICELANDIC OAK FISHING BOATS**.
- ✓ THE BOATS HAVE BEEN **RESTORED** AND ADAPTED TO A NEW ROLE **WITHOUT COMPROMISING** THEIR **ORIGINAL CHARACTER**.
- ✓ THE OAK BOATS WERE **COMMON FISHING BOATS** IN ICELAND BUT ARE **NOWADAYS QUITE RARE** AND BY MAINTAINING THEM NORTH SAILING PRESERVES **CULTURAL HERITAGE**.



Gardar during renovation



Gardar after renovation



Hildur during renovation



Hildur after renovation

TRADITIONAL SAILING SHIPS

North Sailing's sailing ships are today the only traditional gaff rigged sailing ships in Iceland and play an important role in preserving knowledge of handling and maintaining a traditional sailing vessel.

MORE INFO ON THE FLEET ON
WWW.NORTHSAILING.IS

WHY USE OAK BOATS?

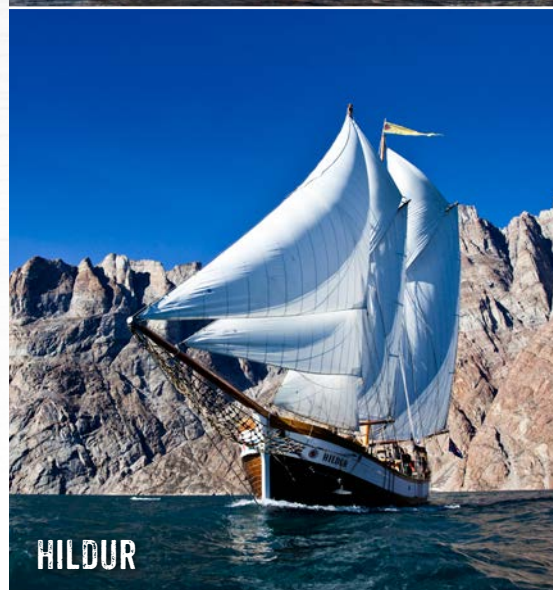
The oak boats are ideal for the purpose of whale watching. They are silent because of their slow going propellant and as a result the engine doesn't have a disturbing effect on the wildlife. In the construction of these oak boats, Icelandic shipwrights elevated their craftsmanship to a fine art. Regulations concerning both the choice of materials and the strength of these boats were particularly strict in Iceland, which makes the boats reliable and safe.



DONNA WOOD



OPAL



HILDUR



HAUKUR



GARÐAR



BJÖSSI SÖR



NÁTTFARI



KNÖRRINN

SAFETY ON BOARD

- ✓ All crew members attend regular courses and **training in maritime safety and life saving** at The Maritime Safety and Survival Training Centre.
- ✓ All boats undergo **strict inspections** in compliance with the **rules and regulations** of The Icelandic Maritime Administration.
- ✓ All **crew members** and **passengers** are insured by VÍS Insurances.
- ✓ We support www.safetravel.is



We will keep you safe!

SERVICE ON BOARD

- ✓ **On board** we'll provide you with **extra clothes**: warm overalls, raincoats, hats and mittens to **keep you dry and warm**.
- ✓ **During the tour** we'll offer our widely appreciated Icelandic cinnamon buns, a **family recipe** baked locally, and **hot chocolate** to round off the tour.



Warm



Happy

ENVIRONMENTAL SUPPORT



North Sailing opposes whale killing and supports the protection of endangered species by being a partner of IFAW - International Fund for Animal Welfare.



North Sailing is certified by the Blue Flag, a voluntary eco-label, awarded to beaches and marinas that work towards sustainable development.



North Sailing supports the 'Meet Us Don't Eat Us' project which encourages tourists to enjoy whales in their natural habitat rather than on their plate.



North Sailing prints at an eco-labelled printing company.



Share your story

tripadvisor®

Instagram

YouTube

@northsailing

facebook

flickr

#NORTHSAILING

"Absolutely amazing experience!"
"A perfect trip with excellent staff"



DID THE TOUR MEET YOUR EXPECTATIONS?
PLEASE LET US KNOW ON

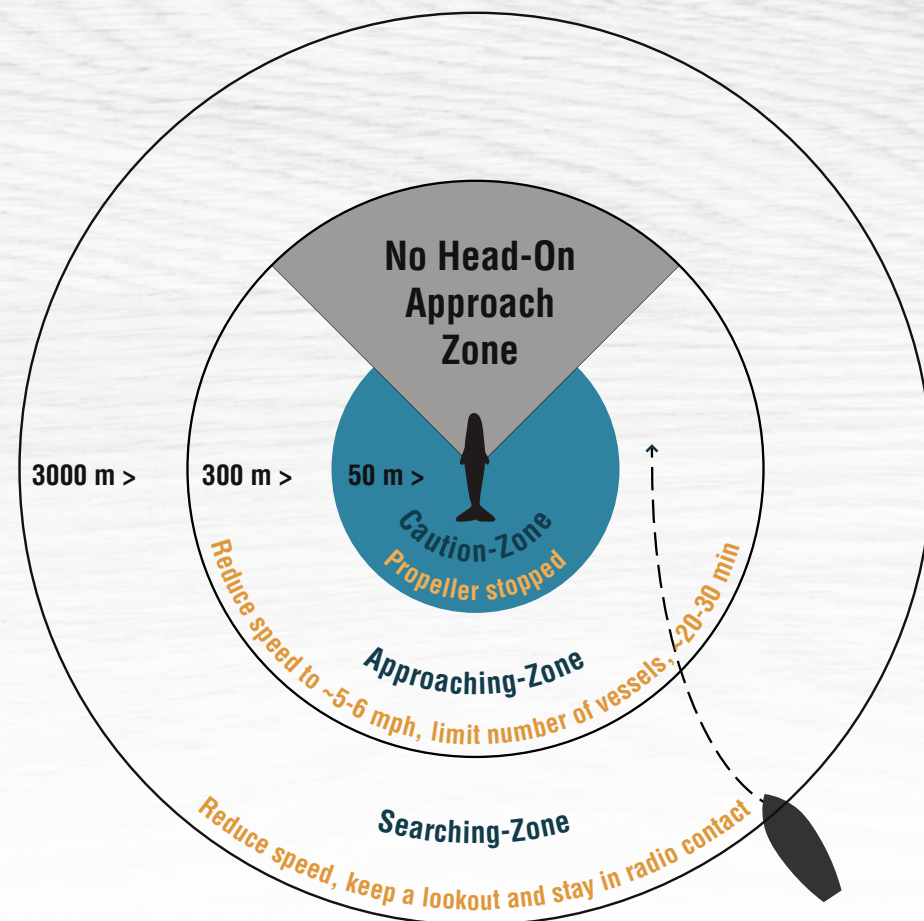
tripadvisor®

CODE OF CONDUCT

FOR RESPONSIBLE WHALE WATCHING

We have to remember that whales are wild animals and to be able to enjoy them in the future we need to be patient and show them respect. We will try to get you close but how close we get is always on the animal's terms as we aim to minimise disturbance.

This is a **Code of Conduct** we aim to abide by, however, there are many variables to consider when out at sea, such as the weather, number of whales, prey availability, if there are calves present, animal behaviour and so on and so forth.



THE CODE IS AS FOLLOWS:

Caution-Zone (50m >)

When possible, stop the propeller if cetacean approaches the vessel and do not re-engage propulsion until the cetacean is observed well clear of your vessel.

Do not touch, swim with or feed cetacean.

Approaching-Zone (300m >)

Aim at maintaining a distance of 300 m at the beginning of the encounter and gradually get closer with time.

Stop the main propeller (max speed ~5-6 mph). If the cetacean is travelling fast you can speed up a little (up to ~8 mph) but not directly towards the animal.

Avoid following behind cetacean and never deliberately approach directly in front. Vessel movements should parallel them by approaching cautiously at an oblique angle (from behind).

Don't come closer if there is another boat in the approaching zone, unless the other boat gives away or signals that it safe to approach.

Take turns if there are more boats in the area, preferably each boat shouldn't spend more than 20-30 minutes within the area at once.

Never (deliberately) sail through pods of concentrated cetacean.

Keep a steady speed if dolphins approach the vessel and start bow-riding or slowly stop and let them pass.

Do not attempt to encourage dolphins to bow-ride. Ensure that the vessel does not disturb nesting or resting birds.

Searching-Zone (3000m >)

Keep a dedicated lookout and stay in radio contact with other vessels (approaching and departing).

Avoid making sudden or excessive noises and disturbance for the cetacean. Avoid sudden speed or course changes (approaching and departing).

Assess the cetacean behaviour and avoid repeated attempts to interact with animals that are showing signs of distress.

If you think that this Code of Conduct has not been fulfilled please discuss it with the crew (email info@northsailing.is) and/or contact IceWhale (email info@icewhale.is)





NORTH SAILING



POWERED BY
NATURE

GREEN ENERGY SAILING

Challenges

It is becoming increasingly clear that the use of hydrocarbons cannot be sustained if a dramatic climate change is to be avoided. There are few places in the world where climate change is as evident as in the northern hemisphere. Arctic sea ice has melted dramatically in recent years, breaking all previous records.

NORTH SAILING TAKES ACTION — GOES FROM ECO-FRIENDLY TO CARBON-FREE!

Go carbon-free with North Sailing!

In 2015, North Sailing will offer **carbon-free** whale watching.

Opal, one of the North Sailing vessels, will be **the first ship in the world** to be installed with a unique Regenerative Plug-in Hybrid Propulsion system. This system will allow the ship to run solely on renewable energy.



We get closer to Nature — with respect for Nature

By using the unique Regenerative Plug-in Hybrid Propulsion system in whale watching we add a new dimension to the way our guests experience nature. By eliminating the noise from the engine you will hear these majestic animals louder and clearer. The unique slow-going electric driven propeller is extremely quiet in the water.



In harmony with Nature

Our obligation is to minimize the disturbance to the whales in their natural environment and at the same time bring our passengers closer. We are guests in the world of whales, which we ought to respect.

ASK OUR STAFF ABOUT OUR CARBON-FREE GOALS!

Already driving electric cars, we aim high when it comes to future goals in carbon-free energy.



ACCOMMODATION IN HÚSAVÍK

- 1 **Kaldbakskot Cottages**
www.cottages.is
+354 464 1504
- 2 **Fosshótel**
www.fosshotel.is
+354 464 1220
- 3 **The Old Fishfactory Guesthouse**
+354 464 0255
- 4 **Árból Guesthouse**
www.arbol.is
+354 464 2220
- 5 **Húsavík Guesthouse**
www.husavikguesthouse.is
+354 463 3399
- 6 **Guesthouse Sigtún**
www.guesthousesigtun.is
+354 864 0250
- 7 **Saltvík Accommodation**
www.saltvik.is
+354 847 9515
- 8 **Húsavík Cape Hotel**
www.husavikhotel.com
+354 463 3399
- 9 **Húsavík Hostel**
www.husavikhostel.com
+354 463 3399

LOCAL SERVICE

- 1 Húsavík Information Centre
- 2 Camp Site
- 3 Swimming Pool
- 4 Supermarket
- 5 Pharmacy
- 6 Library
- 7 Bakery
- 8 Liquor Store
- 9 Bookstore
- 10 Local Handicraft

MAP OF HÚSAVÍK CENTRE

NORTH SAILING'S AREA

- 1 Whale Watching Centre
• Hvalbakur Café
• Boutique
- 2 North Sailing's Pier / Boarding
- 3 Restaurant Gamli Baukur

1 THE HÚSAVÍK WHALE MUSEUM

The Húsavík Whale Museum was founded in 1997 and North Sailing is proud of having been a supporter from the very beginning. The museum plays an important educational and scientific role and for many years North Sailing's boats have been a platform for the museum's researches.



THE HÚSAVÍK MUSEUM

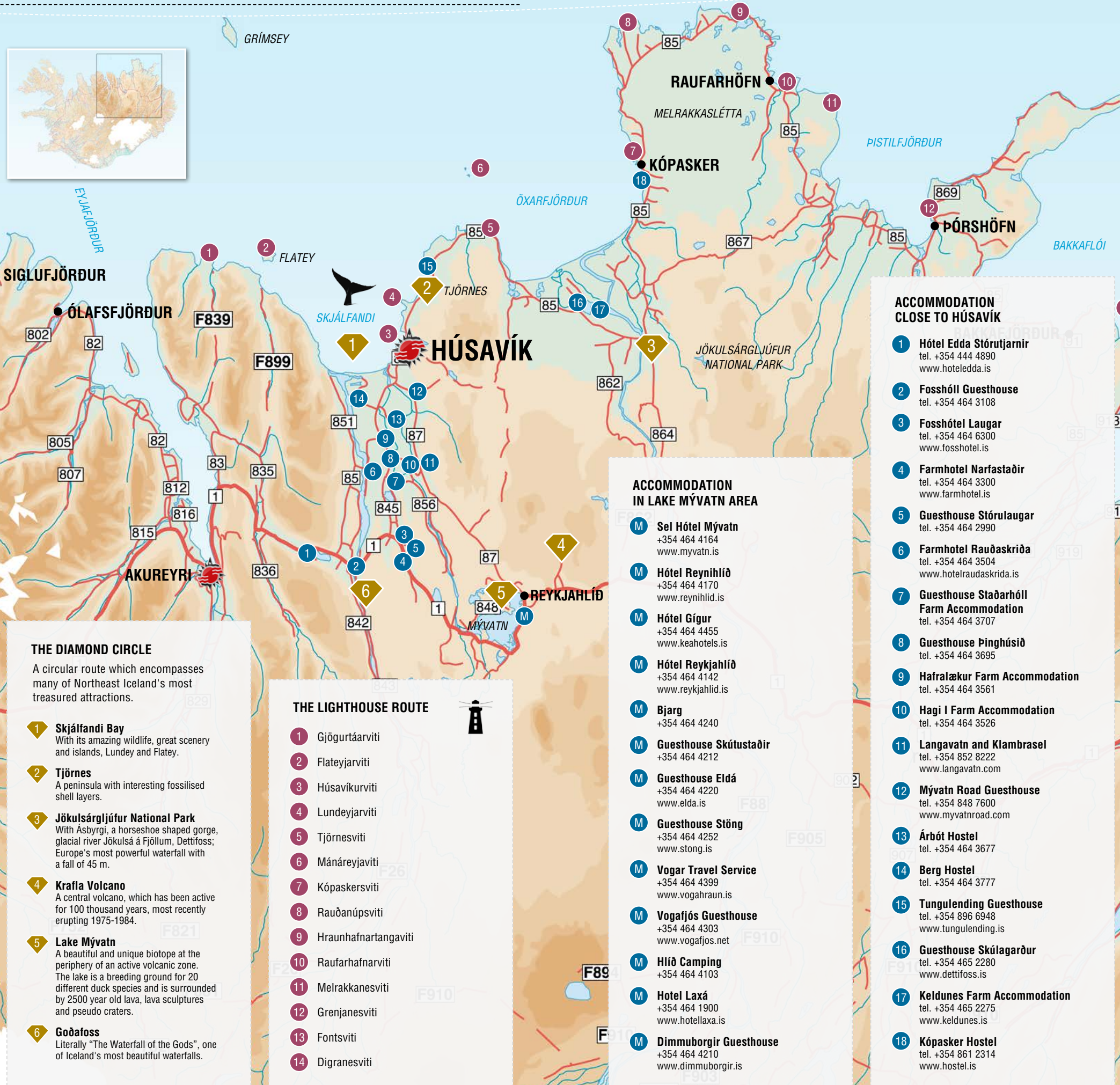
The Húsavík Museum includes The Folk Museum, The Maritime Museum and The Natural History Collection as well as a collection of local photographs and paintings. The Maritime Museum gives great insight into the history of fishing and coastal culture in the area. It is the perfect place to visit for enriching your coastal experience.



THE EXPLORATION MUSEUM

The Exploration Museum is dedicated to the history of human exploration, from the early explorers to the exploration of space. The main exhibition room features photographs and artifacts from the Apollo Astronaut Training near Húsavík in 1965 and 1967. Other exhibition rooms feature the history of Viking Exploration, Arctic explorers and a timeline of exploration history.

MAP OF NORTHEAST ICELAND



THE DIAMOND CIRCLE

A circular route which encompasses many of Northeast Iceland's most treasured attractions.

- 1 Skjálfandi Bay
With its amazing wildlife, great scenery and islands, Lundey and Flatey.
- 2 Tjörnes
A peninsula with interesting fossilised shell layers.
- 3 Jökulsárgljúfur National Park
With Ásbyrgi, a horseshoe shaped gorge, glacial river Jökulsá á Fjöllum, Dettifoss; Europe's most powerful waterfall with a fall of 45 m.
- 4 Krafla Volcano
A central volcano, which has been active for 100 thousand years, most recently erupting 1975-1984.
- 5 Lake Mývatn
A beautiful and unique biotope at the periphery of an active volcanic zone. The lake is a breeding ground for 20 different duck species and is surrounded by 2500 year old lava, lava sculptures and pseudo craters.
- 6 Goðafoss
Literally "The Waterfall of the Gods", one of Iceland's most beautiful waterfalls.

THE LIGHTHOUSE ROUTE

- 1 Gjögurtárviti
- 2 Flateyjarviti
- 3 Húsavíkurviti
- 4 Lundeyjarviti
- 5 Tjörnesviti
- 6 Mánaréyjaviti
- 7 Kópaskersviti
- 8 Rauðanúpsviti
- 9 Hraunhafnartangaviti
- 10 Raufarhafnarviti
- 11 Melrakknesviti
- 12 Grenjanesviti
- 13 Fontsviti
- 14 Digranesviti

ACCOMMODATION IN LAKE MÝVATN AREA

- M Sel Hótel Mývatn
+354 464 4164
www.myvatn.is
- M Hótel Reyhlið
+354 464 4170
www.reyhliid.is
- M Hótel Gígur
+354 464 4455
www.keahotels.is
- M Hótel Reykjahlið
+354 464 4142
www.reykjahlid.is
- M Bjarg
+354 464 4240
- M Guesthouse Skútustaðir
+354 464 4212
- M Guesthouse Eldá
+354 464 4220
www.elda.is
- M Guesthouse Stöng
+354 464 4252
www.stong.is
- M Vogar Travel Service
+354 464 4399
www.vogahraun.is
- M Vogafjós Guesthouse
+354 464 4303
www.vogafjos.net
- M Hlið Camping
+354 464 4103
- M Hotel Laxá
+354 464 1900
www.hotellaxa.is
- M Dimmuborgir Guesthouse
+354 464 4210
www.dimmuborgir.is

ACCOMMODATION CLOSE TO HÚSAVÍK

- 1 Hótel Edda Stórutjarnir
tel. +354 444 4890
www.hoteledda.is
- 2 Fosshóll Guesthouse
tel. +354 464 3108
- 3 Fosshótel Laugar
tel. +354 464 6300
www.fosshotel.is
- 4 Farmhotel Narfastaðir
tel. +354 464 3300
www.farmhotel.is
- 5 Guesthouse StóruLaugar
tel. +354 464 2990
- 6 Farmhotel Rauðaskriða
tel. +354 464 3504
www.hotelraudaskrida.is
- 7 Guesthouse Staðarhóll Farm Accommodation
tel. +354 464 3707
- 8 Guesthouse Pinghúsið
tel. +354 464 3695
- 9 Hafraækur Farm Accommodation
tel. +354 464 3561
- 10 Hagi I Farm Accommodation
tel. +354 464 3526
- 11 Langavatn and Klambasel
tel. +354 852 8222
www.langavatn.com
- 12 Mývatn Road Guesthouse
tel. +354 848 7600
www.myvatnroad.com
- 13 Árbót Hostel
tel. +354 464 3677
- 14 Berg Hostel
tel. +354 464 3777
- 15 Tungulending Guesthouse
tel. +354 896 6948
www.tungulending.is
- 16 Guesthouse Skúlagarður
tel. +354 465 2280
www.dettifoss.is
- 17 Keldunes Farm Accommodation
tel. +354 465 2275
www.keldunes.is
- 18 Kópasker Hostel
tel. +354 861 2314
www.hostel.is

WELCOME

TO OUR NEW WHALE WATCHING CENTRE

Look for our
yellow flags



WE ARE PROUD OF OUR AWARDS

2014

Landstólpinn - Icelandic Regional Development Institute - Awards for the development of whale watching in Húsavík



2012 - 2014

One of Iceland's Strongest Companies



2010

Icelandic Web Awards



2007

The Innovation Award from the Icelandic Travel Industry



2003

Scandinavian Travel Award



1996

Silver Otter Award from the British Guild of Travel Writers



1996

Environmental Award from the Icelandic Tourist Board



MEMBERSHIP AND LICENCES



Icelandic Travel Industry Association



WHERE TO GET TICKETS:

✓ The Whale Watching Centre

✓ Call +354 464 7272

✓ Book online
www.northsailing.is
or scan code to book with a mobile device.



We recommend booking in advance.

We accept all major credit cards and foreign currency.

Guidance generally in English but other languages available are: German, Italian, Spanish, Swedish, Danish, Norwegian and Icelandic.

Please note that tours may vary. No guarantees can be given for sightings and timings can change slightly as the sailing routes can differ. The natural environment is untamed and therefore we do not control the animals, the weather and other elements of nature.



North Sailing
HÚSAVÍK

WHALES OF SKJÁLFANDI BAY

These are the whale species that have been spotted in Skjálfandi Bay from the beginning of whale watching from Húsavík.

SIGHTINGS SUMMER 2014 **97%**
SIGHTINGS WINTER 2014 **60%**



☐ **Minke whale**
Balaenoptera acutorostrata
Hrefna
11 m & 10 t.



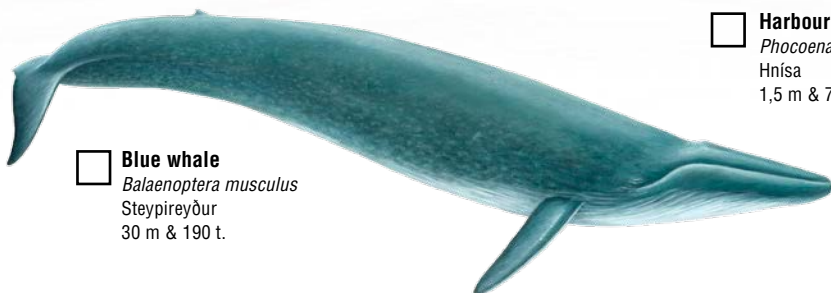
☐ **Humpback whale**
Megaptera novaeangliae
Hnúfubakur
17 m & 35 t.



☐ **White beaked dolphin**
Lagenorhynchus albirostris
Hnýðingur (Höfrungur)
3 m & 350 kg.



☐ **Harbour porpoise**
Phocoena phocoena
Hnísa
1,5 m & 70 kg.



☐ **Blue whale**
Balaenoptera musculus
Steypireyður
30 m & 190 t.



☐ **Fin whale**
Balaenoptera physalus
Langreyður
25 m & 120 t.



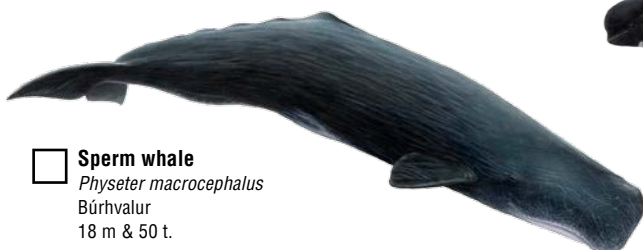
☐ **Northern bottlenose whale**
Hyperoodon ampullatus
Andarnefja
9 m & 8 t.



☐ **Killer whale (Orca)**
Orcinus orca
Háhyrningur
9 m & 9 t.



☐ **Sei whale**
Balaenoptera borealis
Sandreyður
20 m & 30 t.



☐ **Sperm whale**
Physeter macrocephalus
Búrhvalur
18 m & 50 t.



☐ **Pilot whale**
Globicephala melas
Grindhvalur
8 m & 5 t.

For more info on the whales and sound recordings from the bay visit our website: www.northsailing.is

* Summer whale watching is from May - September.
Winter whale watching is March, April and October.

For detailed info on sightings see our logbooks on our website: www.northsailing.is

BIRDS OF SKJÁLFANDI BAY

Visiting Skjálfandi Bay can be a great treat for bird watchers. These are birds that can be seen during whale watching tours in Skjálfandi Bay.



☐ **Arctic Tern**
Sterna paradisaea
Kría

☐ **Fulmar**
Fulmarus glacialis
Fýll



☐ **Puffin**
Fratercula arctica
Lundi



☐ **Common Guillemot / Common Murre**
Uria aalge
Langvía



☐ **Eider duck**
Somateria mollissima
Æðartugl



☐ **Kittiwake**
Rissa tridactyla
Rita



☐ **Brännich's Guillemot / Thick-billed Murre**
Uria lomvia
Stuttnefja



☐ **Gannet**
Morus bassanus
Súla



☐ **Great Skua**
Stercorarius skua
Skúmur



☐ **Great Cormorant**
Phalacrocorax carbo
Dílaskarfur



☐ **Arctic Skua / Parasitic Jaeger**
Stercorarius parasiticus
Kjóí



☐ **Herring Gull**
Larus argentatus
Silfurmáfur



☐ **Lesser Black-backed Gull**
Larus fuscus
Silamáfur



☐ **Black Guillemot**
Cephus grylle
Teista



☐ **Black-headed Gull**
Larus ridibundus
Hettumáfur



☐ **Razorbill**
Alca torda
Álka



☐ **Great Black-backed Gull**
Larus marinus
Svartbakur



☐ **Red-necked Phalarope**
Phalaropus lobatus
Öðinshani



☐ **Long-tailed duck**
Clangula hyemalis
Hávella



tel. +354 464 7272

For more info on the birds visit our website: www.northsailing.is